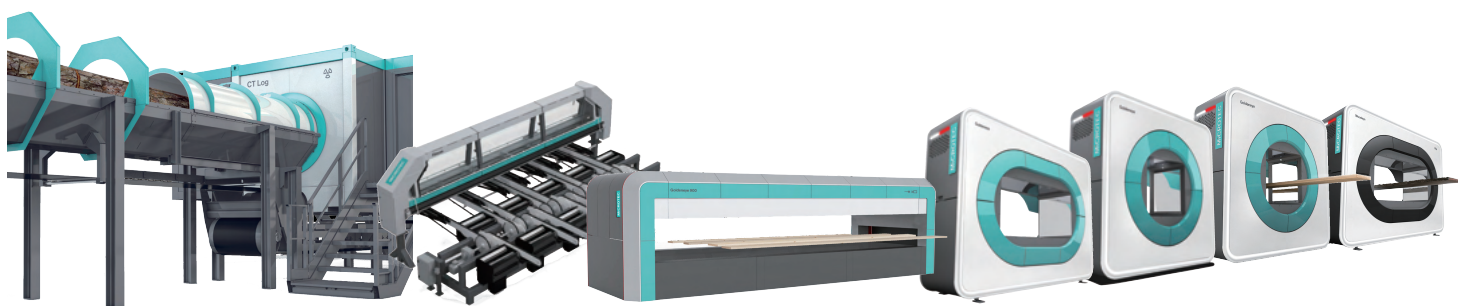




# INNOVATIVE LOG & BOARD SCANNING SOLUTIONS

## MiCROTEC Ai



INTEGRATED INTO ALL QUALITY SCANNERS FROM LOG TO FINAL BOARD

Transforming the future of wood scanning,  
we bring excellent service and world-leading scanning  
solutions to the wood processing industry.



*World Leading Wood Scanning Solutions*

**MiCROTEC**

**富崎國際有限公司**

**SK Global Co., Ltd. / Stirling International Co., Ltd.**

172 Hsin Yi St., Feng Yuan Dist., Taichung 420003, Taiwan

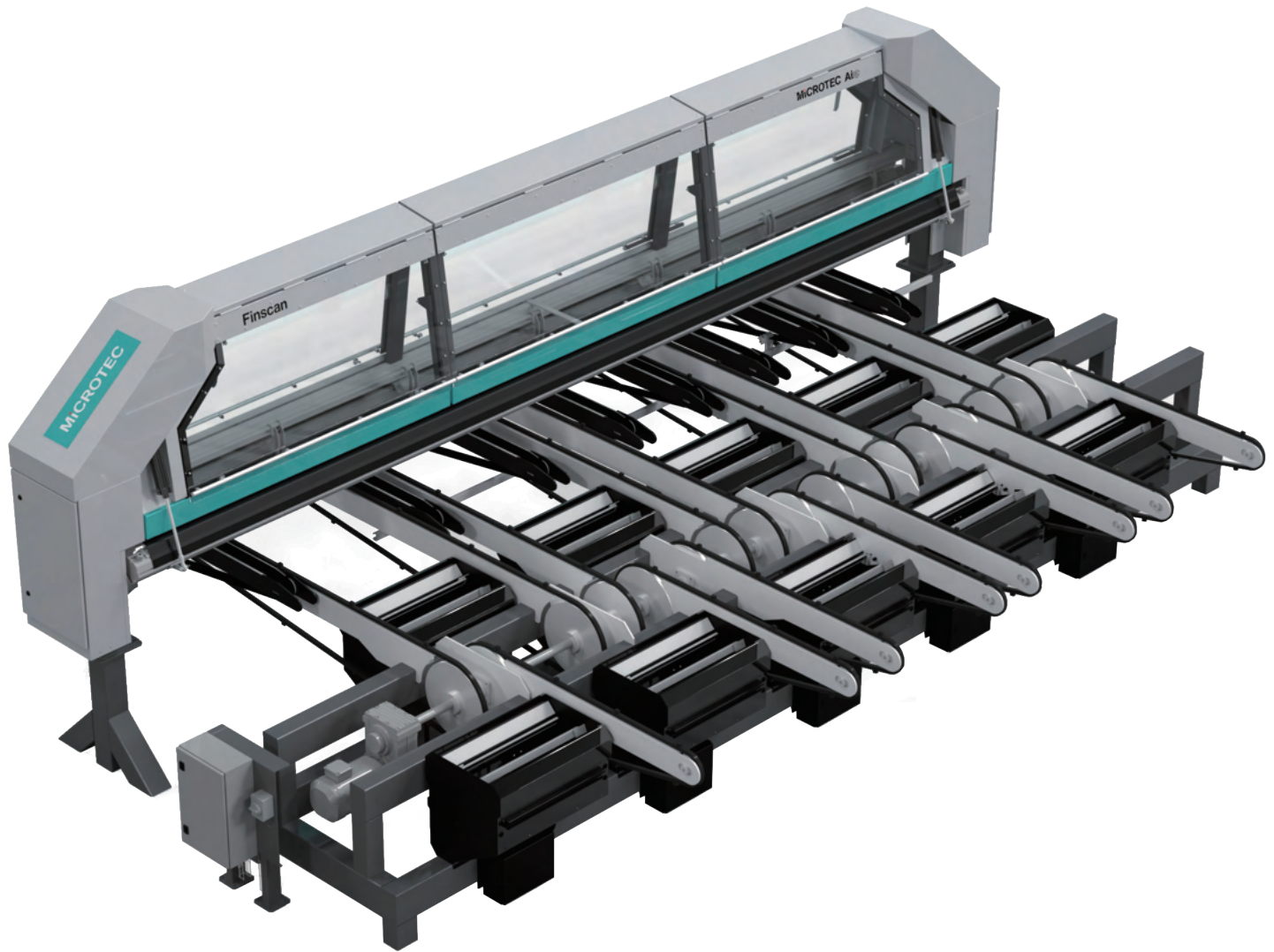
**P** +886-4-25121980 / **F** +886-4-25122703

**E** [info@skglobal.com.tw](mailto:info@skglobal.com.tw)

**[www.skglobal.com.tw](http://www.skglobal.com.tw)**

INDEX

Finscan	01
CT Log	02-03
Goldeneye 300	04
Goldeneye 600	05
Woodeye Rip	06
Goldeneye 700	07
Goldeneye 900	08



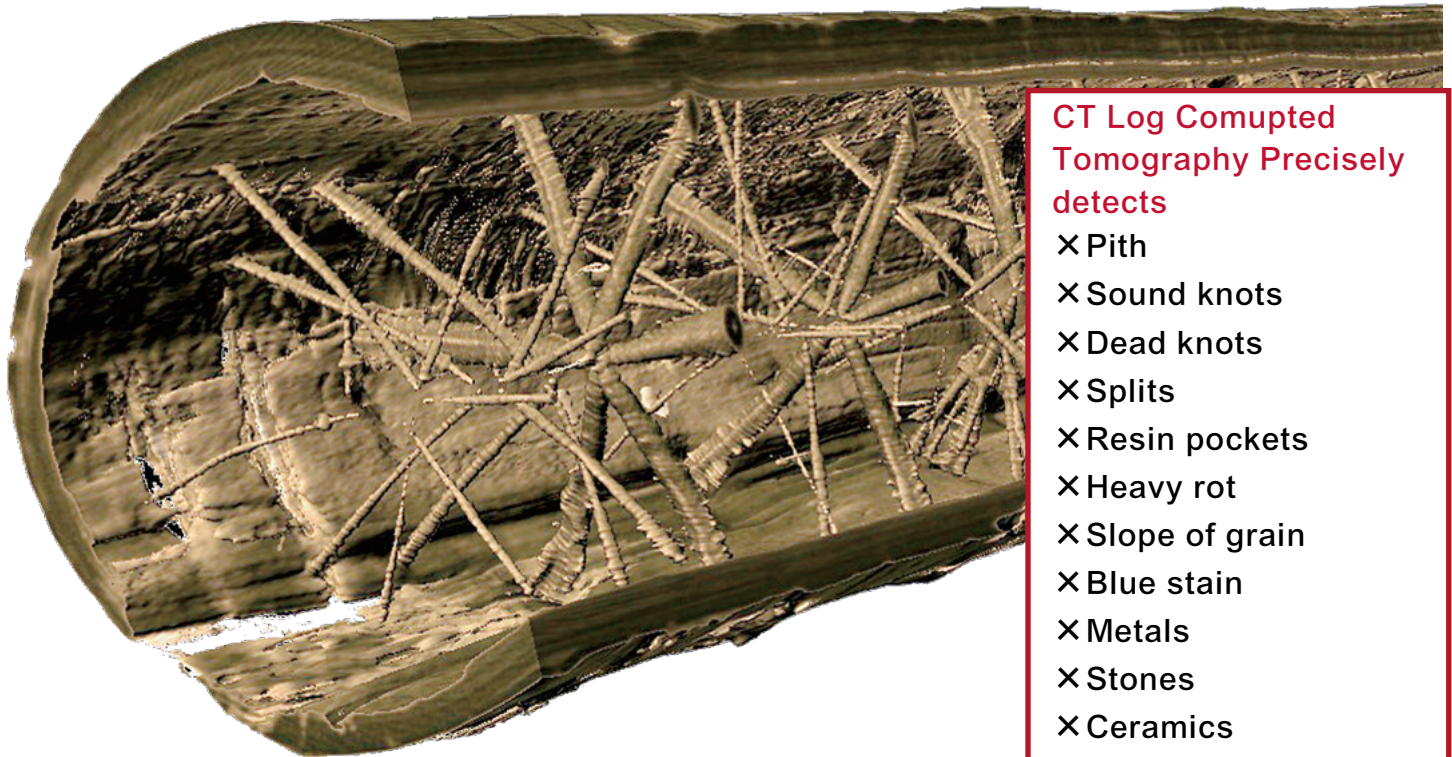
### Benefits of Finscan

- × Proven value yield of over 96%
- × Speed of up to 240 boards per minute
- × Does not require the turning of the board
- × Easy to adjust with different software modules
- × Secures constant quality on customer deliveries

### Special software modules

- × Quality grading
- × Strength grading
- × Component grading
- × Cut-in-two
- × Ripping solutions
- × Re-edging
- × Finger jointing and glued laminated timber grading
- × ALS / NGR grading



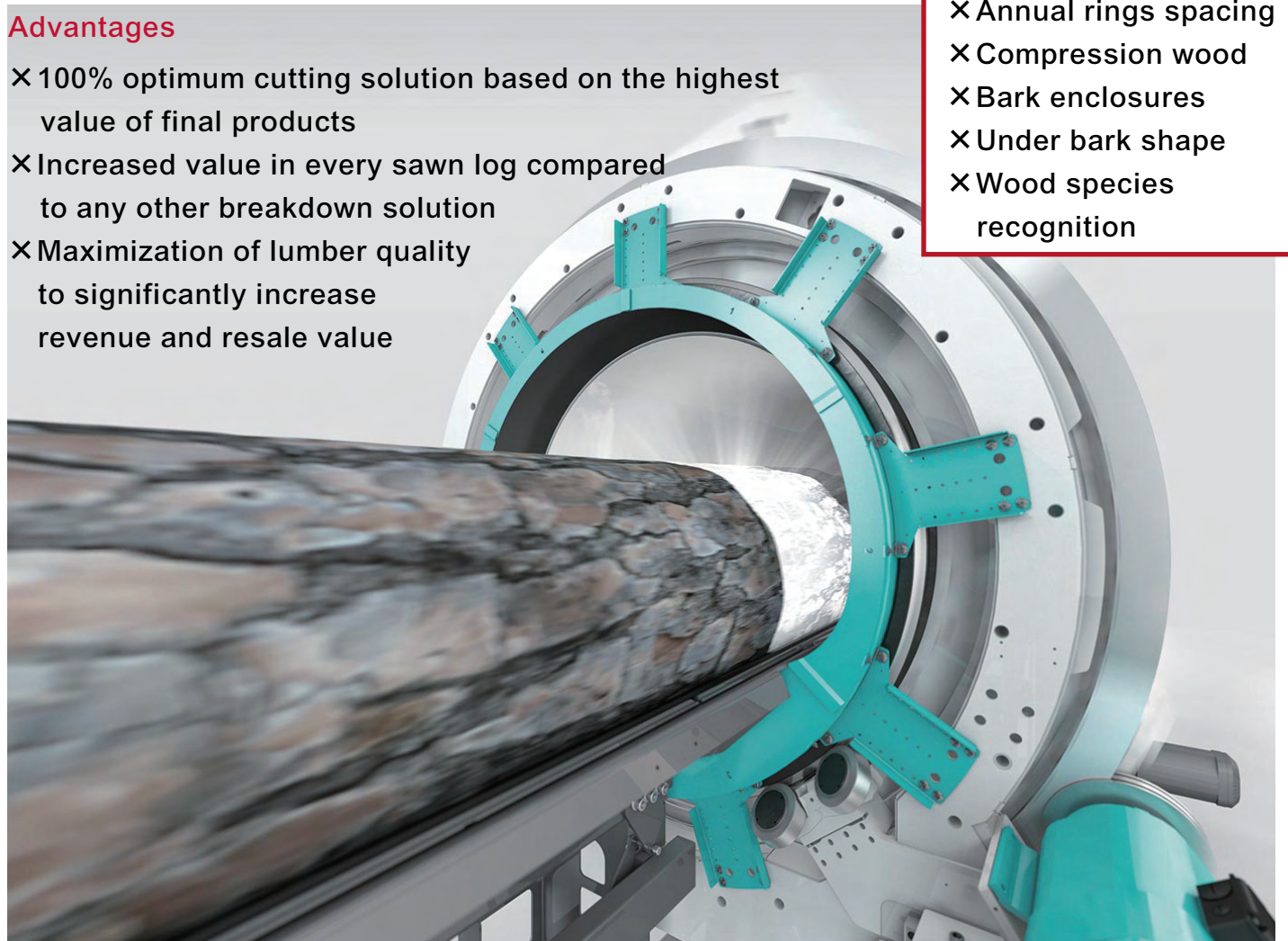


### CT Log Computed Tomography Precisely detects

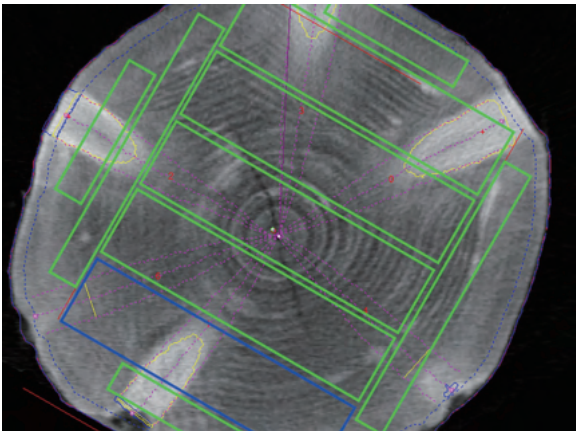
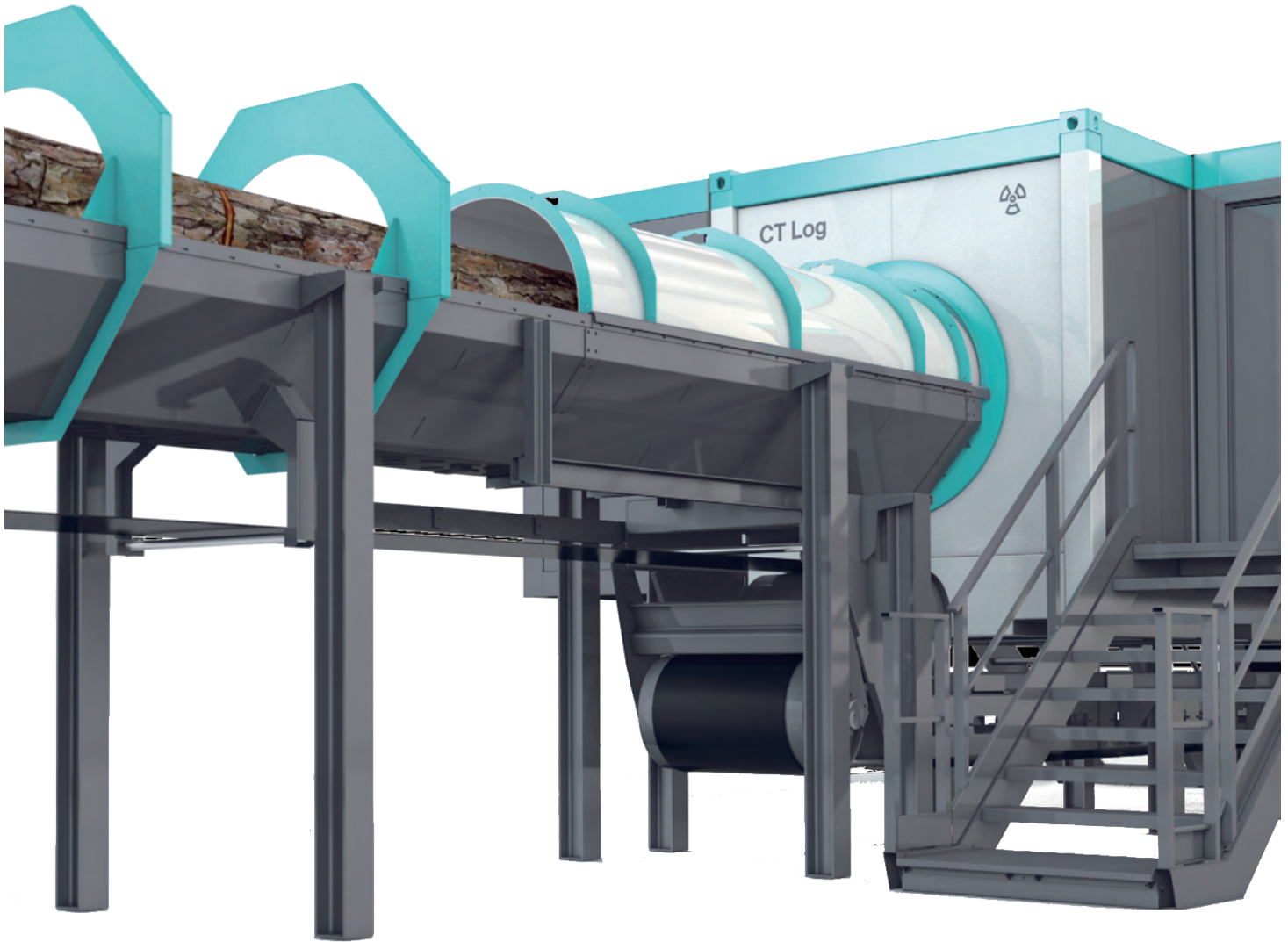
- × Pith
- × Sound knots
- × Dead knots
- × Splits
- × Resin pockets
- × Heavy rot
- × Slope of grain
- × Blue stain
- × Metals
- × Stones
- × Ceramics
- × Heartwood
- × Green density
- × Annual rings spacing
- × Compression wood
- × Bark enclosures
- × Under bark shape
- × Wood species recognition

### Advantages

- × 100% optimum cutting solution based on the highest value of final products
- × Increased value in every sawn log compared to any other breakdown solution
- × Maximization of lumber quality to significantly increase revenue and resale value







### CT Log Computed Tomography features

Conveyor speed	Up to 180 m/min (590 ft/min)
Field of view	Up to 800 mm (32 in)
Log length	Up to 25 m (82 ft)
Full 3D log description	v
Quality grading	v
Virtual grading	v





Advantages

- × Full performance Multi-Sensor Quality Scanner
- × Increased lumber utilization (reducing labor costs)
- × Optimal use machinery capacity
- × Next generation sensors, state-of-the-art cameras and components with Full HD resolution, and faster image acquisition and on-chip image processing, including X-ray technology
- × Award-winning design and functionality, and long product life thanks to a smart design
- × Quick return on investment

Product Applications

Sawmill

- × Sorting
- × Trimming

Repairing Machinery

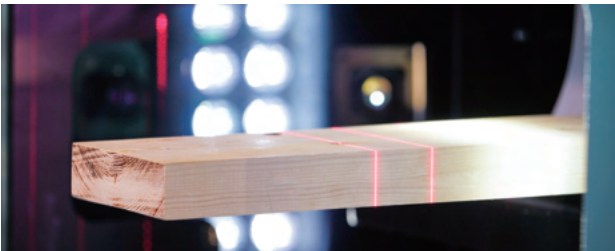
- × Sorting/Cross-cutting
- × Doors & Windows
- × Flooring
- × Furniture

Planermill

- × Sorting/Cross-cutting
- × Trimming
- × Structural
- × Glulam/CLT

Moulding & Millwork

- × Flooring
- × Doors & Windows
- × Moulding



Goldeneye 300 features

Goldeneye 300 features	301	302	306
Dimension (3D laser triangulation)	v	v	v
Grain deviation (laser scatter)	v	v	v
Color	v	v	v
X-ray		v	v
Resonance frequency (laser interferometer)			v
Board cross-section	Up to 130 x 300 m/min (5 x 12 in)		
Conveyor speed	Up to 150 m/min (500 ft/min)		



Product Applications

Sawmill

- × Rip/Edger
- × Sorting
- × Trimming
- × NHLA

Repairing Machinery

- × Glue application
- × Boats/Plugs application

Advantages

- × Color cameras, lasers, and X-ray sensors
- × Recognizes and localizes defects such as knots, cracks, discoloration, pitch pockets, bark, pith, wane, and other dimensional defects.
- × Very low false positive detection rate
- × Ergonomic and compact modular design
- × Optimized configuration for edger, ripping and grading line

Goldeneye 600 features	Goldeneye 601	Goldeneye 602
Dimension (3D laser triangulation)	v	v
Grain deviation (laser scatter)	v	v
Color	v	v
X-ray		v
Board cross-section	100 x 600 mm (4 x 24 in) Up to 100 x 1800 mm (4 x 70 in)*	
Conveyor speed	Up to 350 m/min	

\*extendible in steps of 225 mm or 250 mm, up to a maximum of 750 mm





#### **Main features of Woodeye Rip**

- × High resolution rip scanning
- × Enhanced production yield with 2D optimization
- × Widths up to 700 mm
- × Product planing already at ripping



Product Applications

Sawmill

- × Sorting
- × Trimming
- × Stress grading

Remanufacturing

- × Sorting/Cross-cutting
- × Doors & Windows
- × Flooring
- × Furniture

Planermill

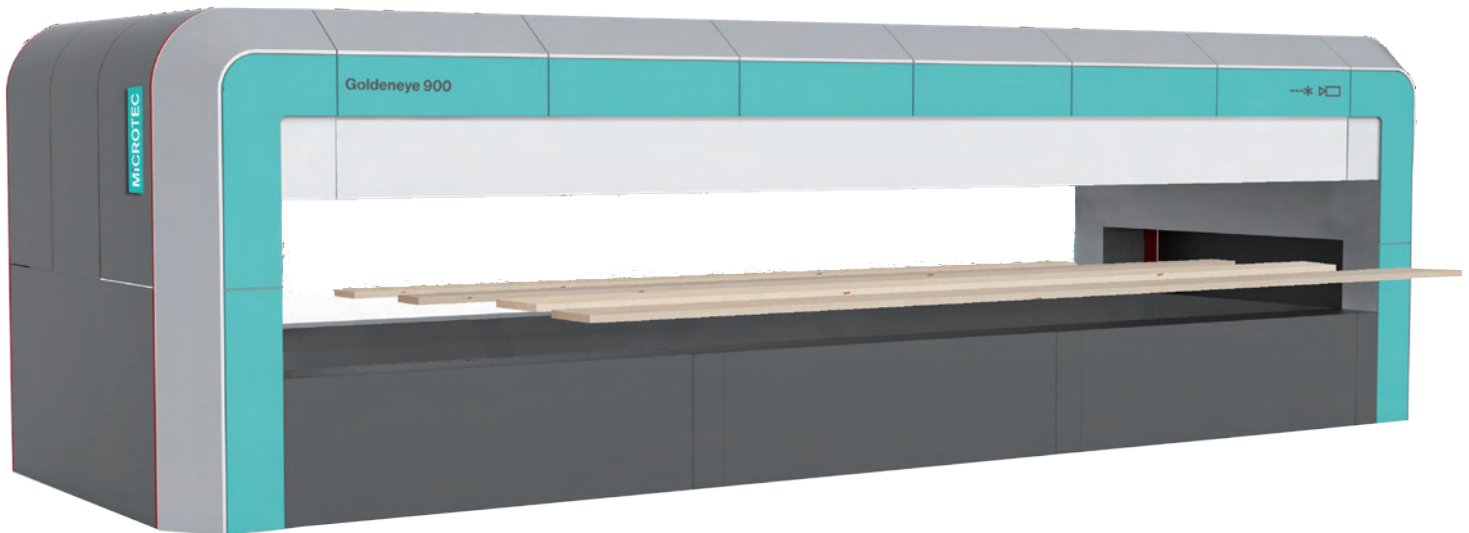
- × Sorting/Cross-cutting
- × Trimming
- × Structural
- × Glulam/CLT
- × Stress grading

Advantages

- × Worldwide-accredited strength grading
- × Multi-Sensor cameras and sensors
- × Next generation X-ray technology to identify wood defects that are not visible on the surface and to determine the internal structure of the lumber
- × Integrates seamlessly with all cross and chop saws as well as sorting and packaging lines

Goldeneye 700 features

	701	702	706
Dimension (3D laser triangulation)	v	v	v
Grain deviation (laser scatter)	v	v	v
Color	v	v	v
X-ray		v	v
Resonance frequency (laser interferometer)			v
Board cross-section	Up to 130 x 300 m/min (5 x 12 in)		
Conveyor speed	Up to 450 m/min (1500 ft/min)		



### Product Applications

#### Sawmill

- × Rip/Edger
- × Sorting
- × Trimming

#### Planermill

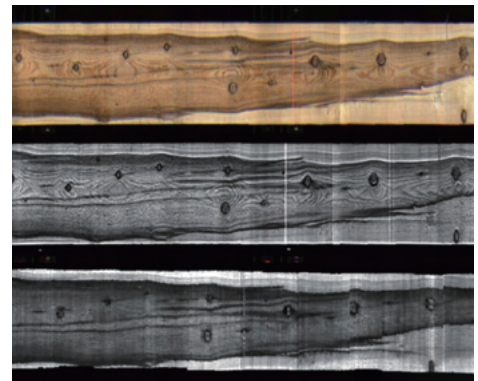
- × Sorting/Cross-cutting
- × Trimming
- × Structural
- × Glulam/CLT
- × NGR

### Advantages

- × Transverse transport
- × One scan solution from all four sides
- × Optional full-length X-ray scanning
- × Simple installation, no elevation changes
- × Scans planed and rough lumber
- × Scans wet and dry lumber
- × Grades lumber based on individual quality parameters
- × Accurately recognizes, localizes and sizes knots and other defects such as cracks, pitch pockets, and discoloration
- × Modular design, depending on the board length
- × Implements customer-specific grading, trimming and sorting rules
- × Comprehensive and easy-to-use user interface



Goldeneye 900	unit	min	max
Species	Resinous & hardwood		
Length	mm	1200	8000
Thickness	mm	12	130
Width	mm	50	610
Speed	m/min		Up to 140



**We provide  
support wherever  
and whenever  
you need it.**

---

Our team is dedicated to installing and fine-tuning new installations, while providing expert advice and training to your operators. SK Global demands the best from our team and offers on-going and in-field training. We are committed to continuously improving and enhancing our customer service around the world.

---